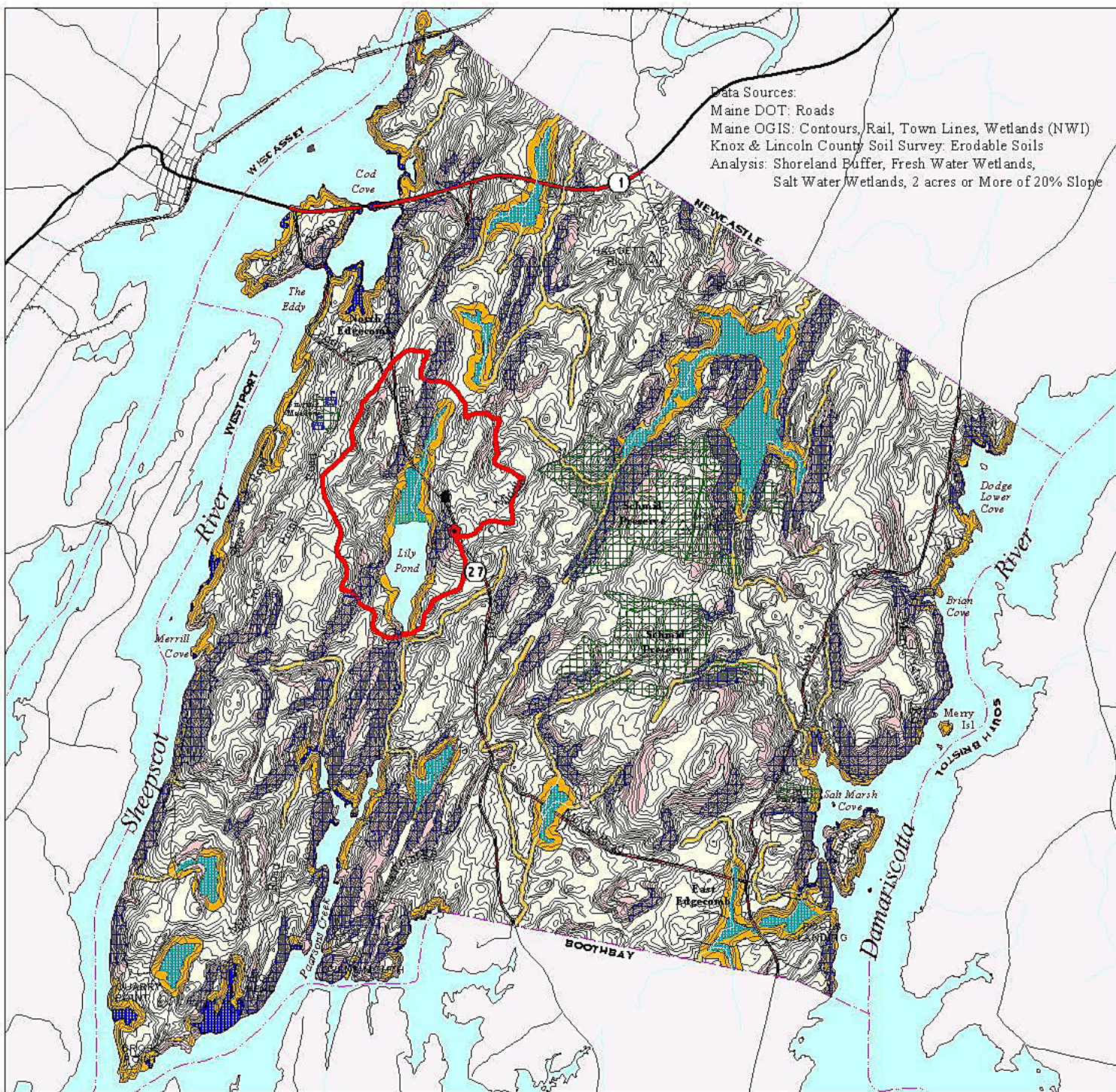




Town of Edgecomb

Slopes, Highly Erodable Soils, Shoreland Buffers & Lily Pond Watershed



Roads

- Principal arterial
- Major/Arb collector
- Minor arterial/collector
- Local

Contours

- 50' Interval
- 10' Interval



Schools



Fire Station



Town Hall



Conservation Properties



Railroad



Town Lines



Lily Pond Watershed



250' Shoreland Buffer



Fresh Water Wetlands



Salt Water Wetlands

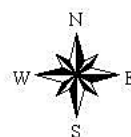


20% Slope, 2 Acres or more



Highly Erodable Soils

0.5 0 0.5 1 Miles



Produced by
 Sheepscot Valley Conservation Association
 GIS Support: Cress
 Data sources: ME OGIS
 October, 2002 (if appropriate)